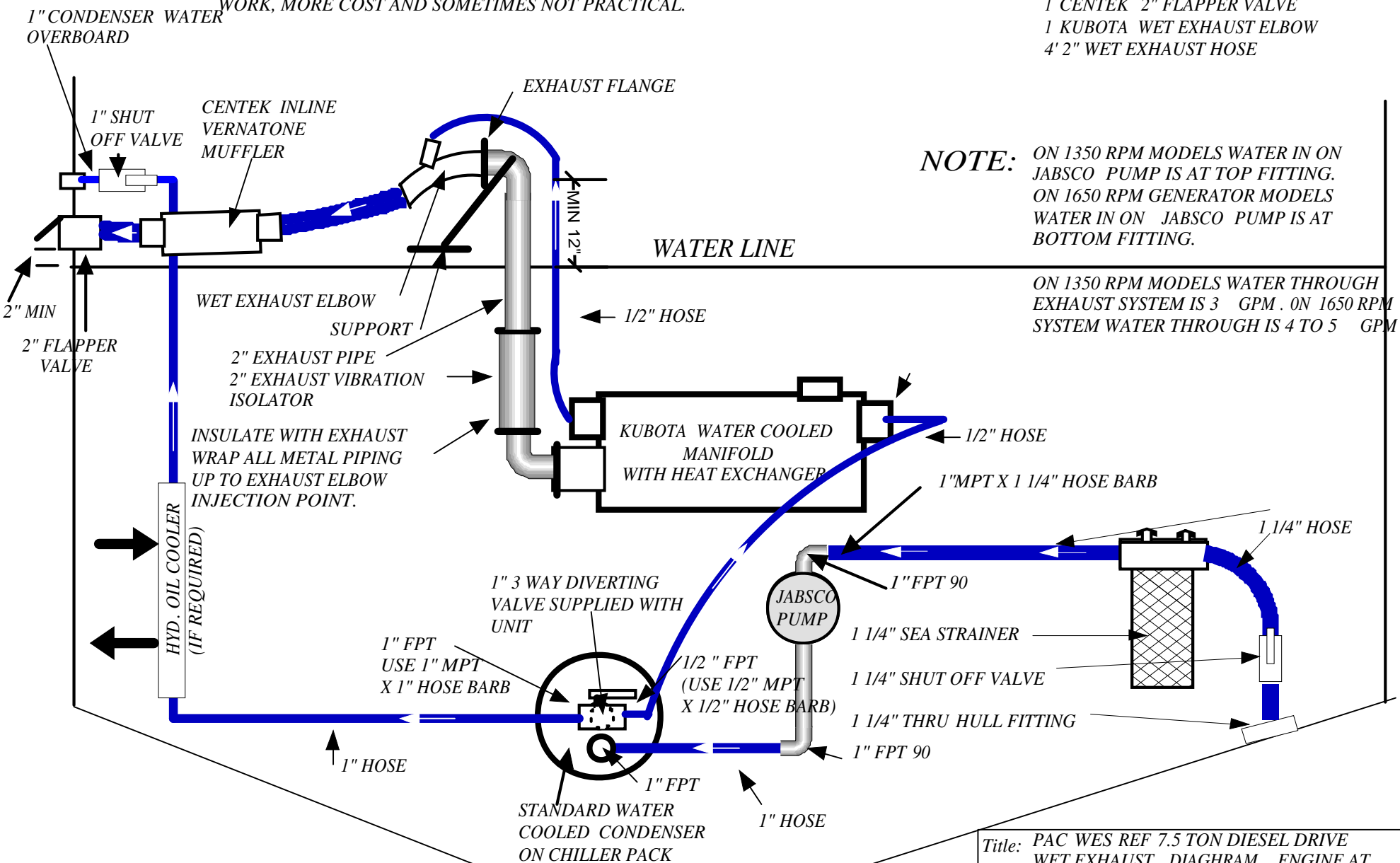


**PACIFIC WEST REFRIGERATION WET EXHAUST
DESIGN "A". ENGINE AT OR BELOW WATER LINE.**

DESIGN A IS PROBABLY THE BEST AND SAFEST DESIGN BUT IS MORE WORK, MORE COST AND SOMETIMES NOT PRACTICAL.

PAC WES REF WET EXHAUST KIT:
PWR-701

- 1 CENTEK 2" VERNATONE MUFFLER
- 1 CENTEK 2" FLAPPER VALVE
- 1 KUBOTA WET EXHAUST ELBOW
- 4' 2" WET EXHAUST HOSE



NOTE: ON 1350 RPM MODELS WATER IN ON JABSCO PUMP IS AT TOP FITTING. ON 1650 RPM GENERATOR MODELS WATER IN ON JABSCO PUMP IS AT BOTTOM FITTING.

ON 1350 RPM MODELS WATER THROUGH EXHAUST SYSTEM IS 3 GPM. ON 1650 RPM SYSTEM WATER THROUGH IS 4 TO 5 GPM.

Title: PAC WES REF 7.5 TON DIESEL DRIVE WET EXHAUST DIAGRAM . ENGINE AT OR BELOW WATER LINE	
Author: PAC WES REF	
Date: 2016	Sheet:
Revision: REV 1B	